

## LCD & CTP Installation Guide

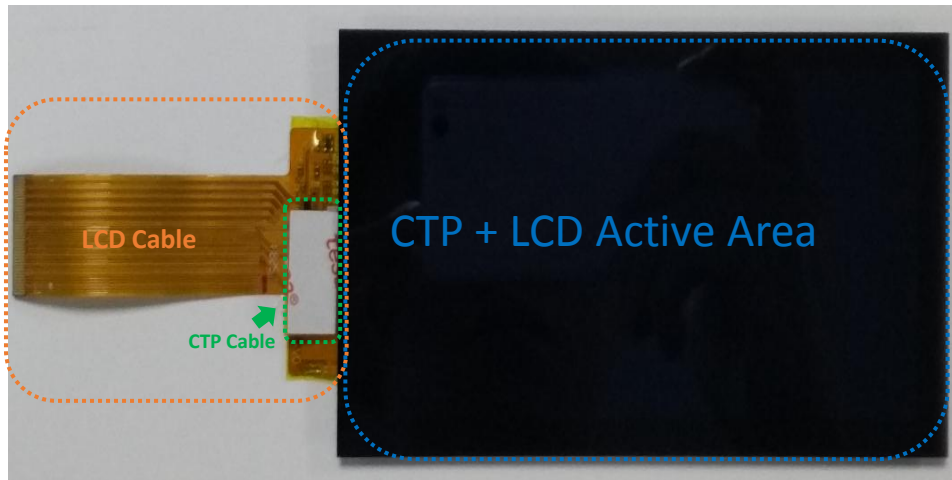


Figure 1: The Structure of LCD & CTP Module



The side you can see the copper pins, called Side A.



The other side you can see a dark brown plastic covered, called Side B.

Figure 2: The Two Sides of LCD Cable

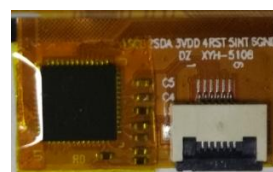
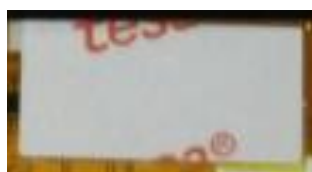


Figure 3: The CTP Cable Top View (Left) and Bottom View (Right)

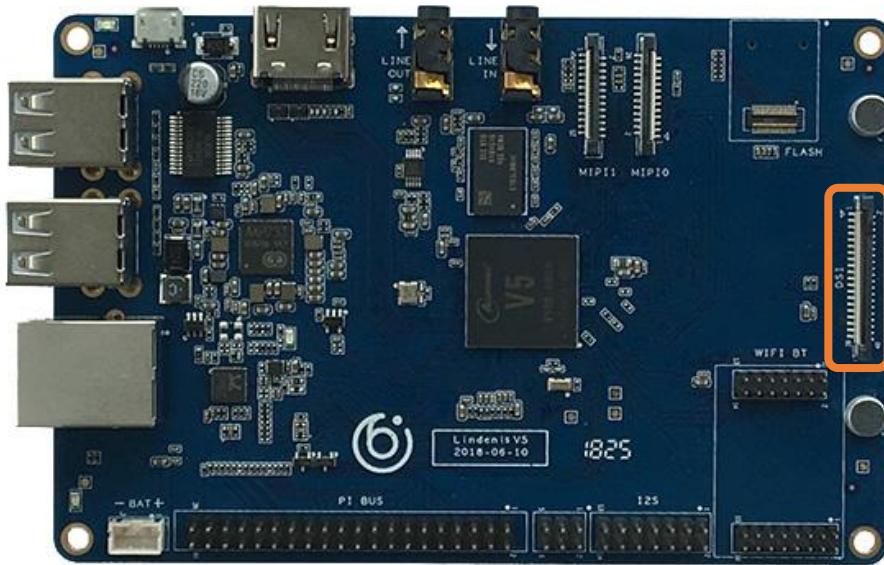


Figure 4: MIPI-DSI LCD Connector Location

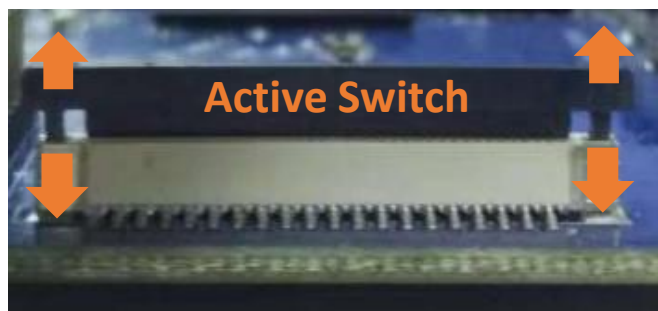
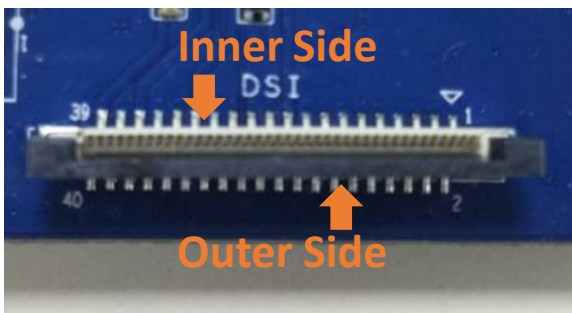
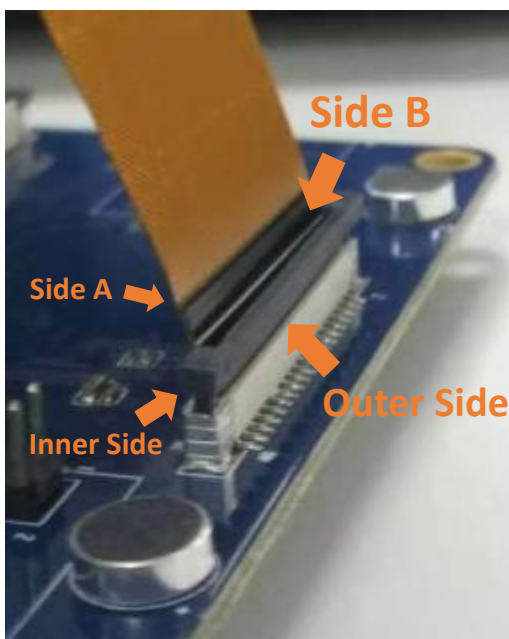


Figure 5: MIPI-DSI LCD Connector



**Step 1: Pull up the switch.**

**Step 2: Put the LCD cable into the connector like Figure 6.**

**Step 3: Press down the switch.**

**So Easy!!!**

Figure 6: How to connect the cable to the connector

!!!

Because the CTP is a TWI device, so we can connect it to V5 board's Pi bus through an adapter.

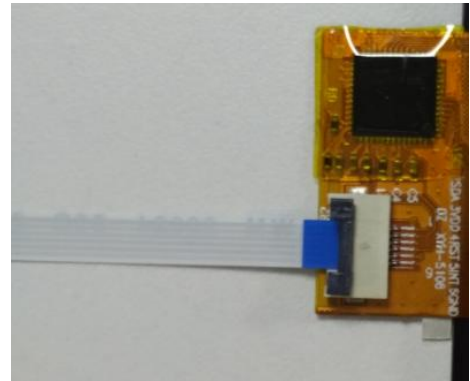
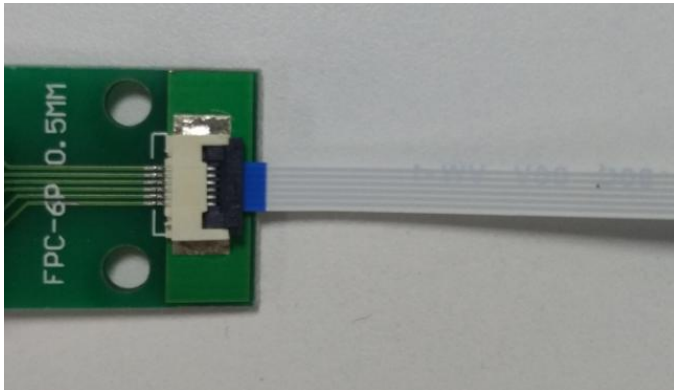
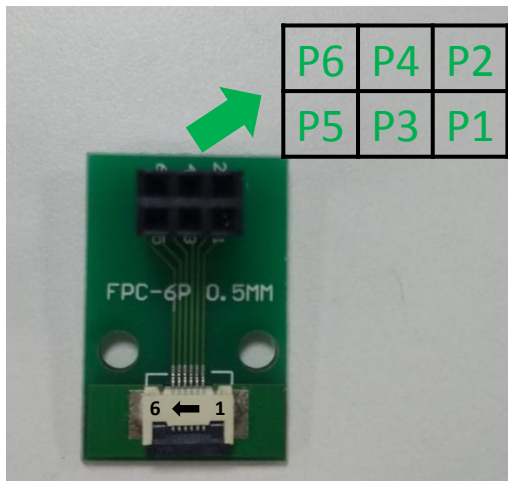


Figure 7: Connect the CTP cable to the adapter with a 10mm 6 pins ribbon cable



P6	P4	P2
P5	P3	P1

P1	SCL
P2	SDA
P3	VDD
P4	RST/WAKE
P5	INT
P6	GND

Figure 8: Pins map of the adapter

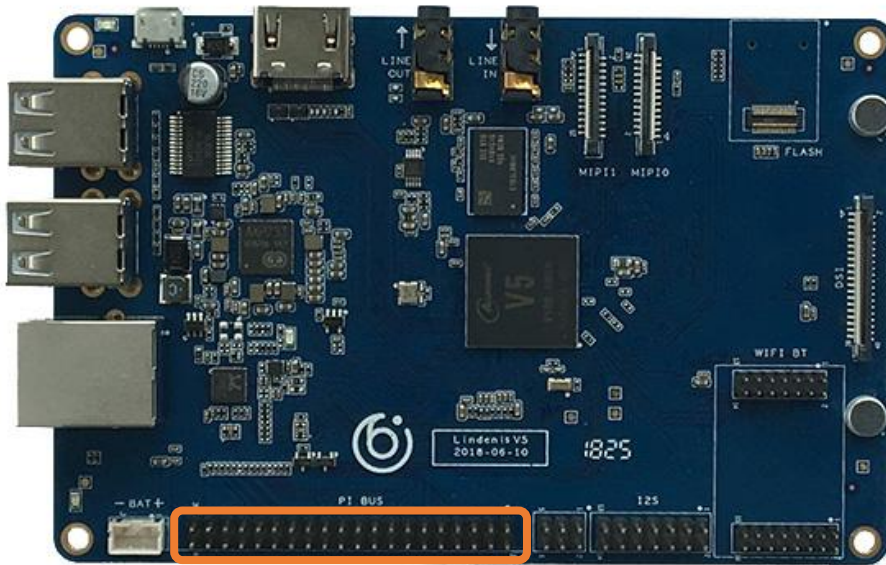


Figure 9: P1 Bus Location

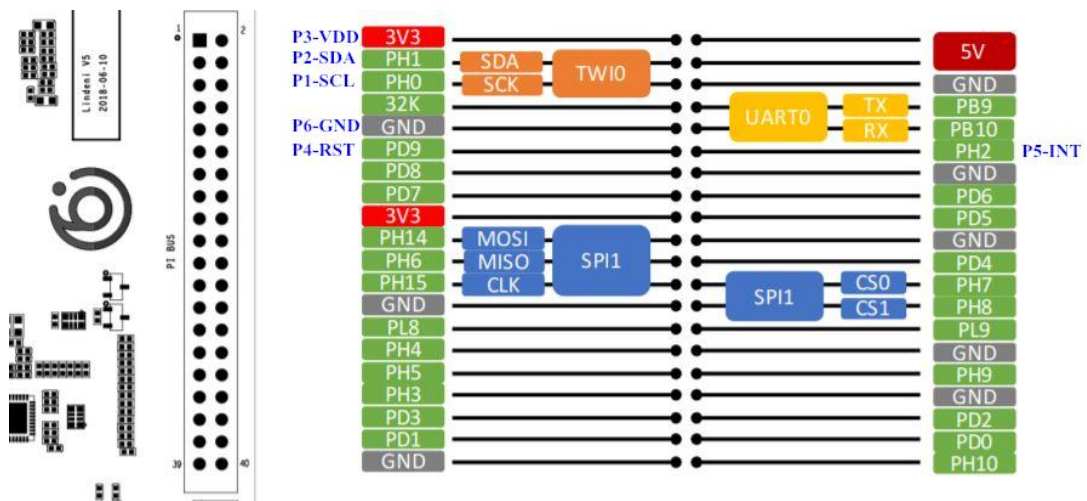


Figure 10: Connect the adapter to the P1 bus